

ArtWay Angle Jigs

Create nesting angle cut beads

- **Angle Jig I**
- **Angle Jig II (for wide angle cut beads)**
- **Use both ArtWay Jigs with 1 inch disk and 2 inch disk extrusions.**



To attach jig to table

Place the shaped aluminum blank over the ArtWay Angle Jig.

Hold down each flattened side of the aluminum blank one at a time and clamp with clamps provided to the table.



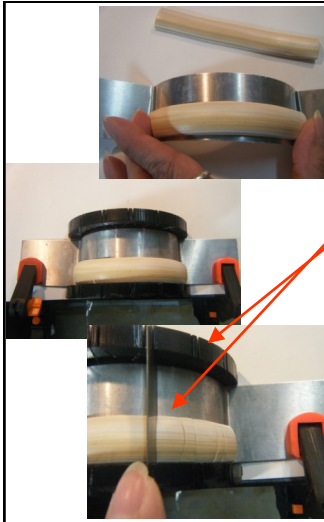
Extrude pieces of polymer clay using ArtWay bracelet disks.

Disk shape shown is the Way 1 disk set .

Extrude the top of the bracelet shape and extrude the bottom of the bracelet shape.

Then assemble by sandwiching the top and bottom pieces and smooth the seams.

At this time a thin sheet of polymer clay can be veneered to these assembled pieces before cutting with the jig.



Cut the extrusions into 4 inch length pieces.

Place one, 4 inch length of clay on the shaped aluminum blank.

Press gently to allow clay to stick to the aluminum blank.

Place the aluminum onto the jig and clamp it to the table with the provided clamps.

Align a blade into the Jig slots and continue guiding the blade through the slots cutting the entire length of the clay into beads.



Leave the cut clay beads in place on the aluminum blank.

To remove the blank. Hold one end of the aluminum blank one side at a time as each clamp is removed.

Carefully remove the aluminum blank and place it in the oven to cure the clay.

Remove the aluminum blank from the oven and separate the beads while still slightly warm from the oven